

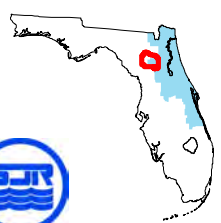


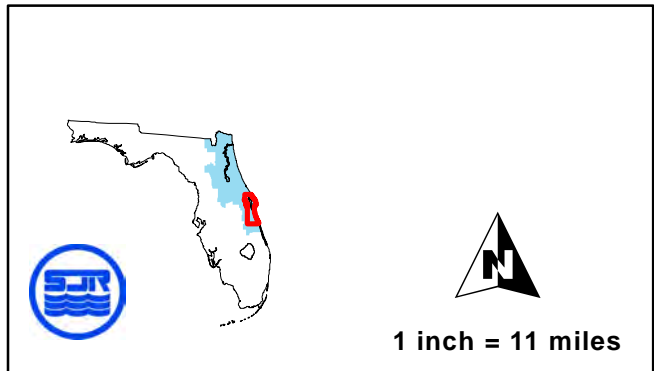
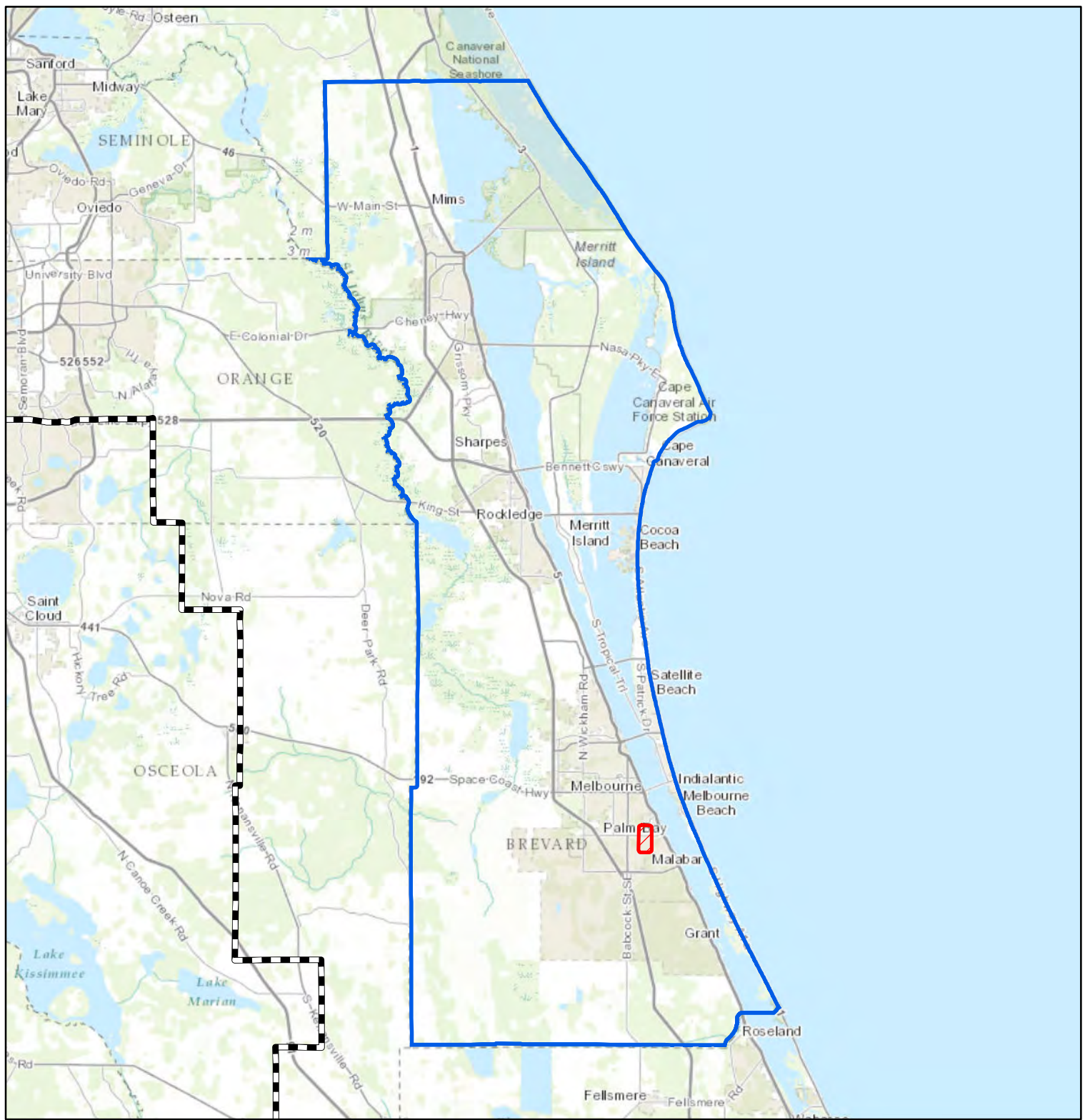
ALACHUA COUNTY

-  Delineated area
-  SJRWMD boundary

This map depicts the groundwater contamination area delineated by the Department in Rule 62-524.430, F.A.C., for Alachua County, effective 11/94.





1 inch = 6 miles

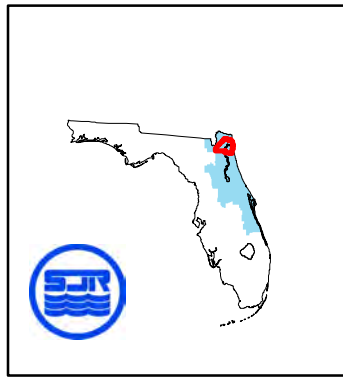
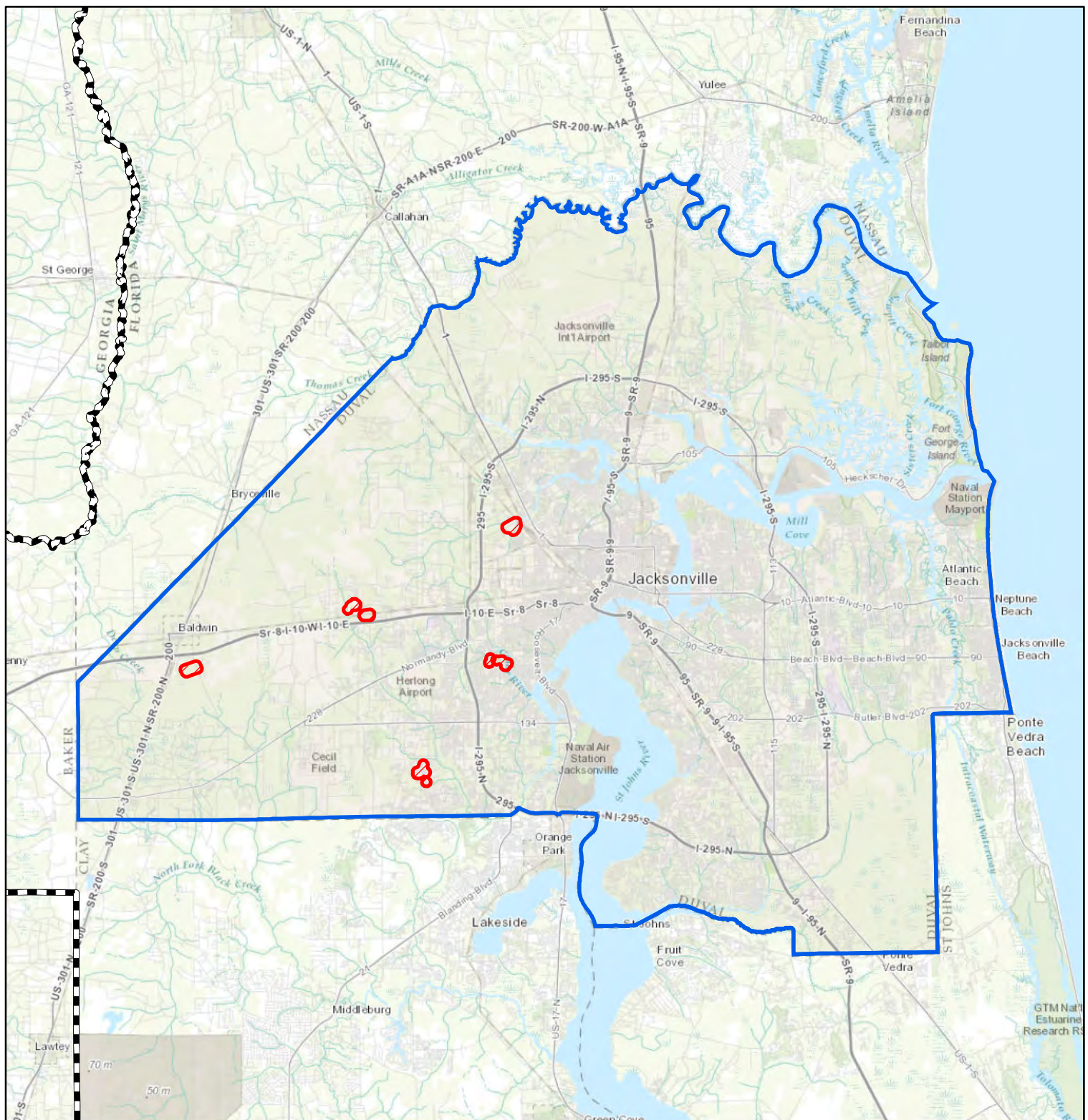


1 inch = 11 miles

BREVARD COUNTY



-  Delineated area
-  SJRWMD boundary

This map depicts the groundwater contamination area delineated by the Department in Rule 62-524.430, F.A.C., for Brevard County, effective 11/94.

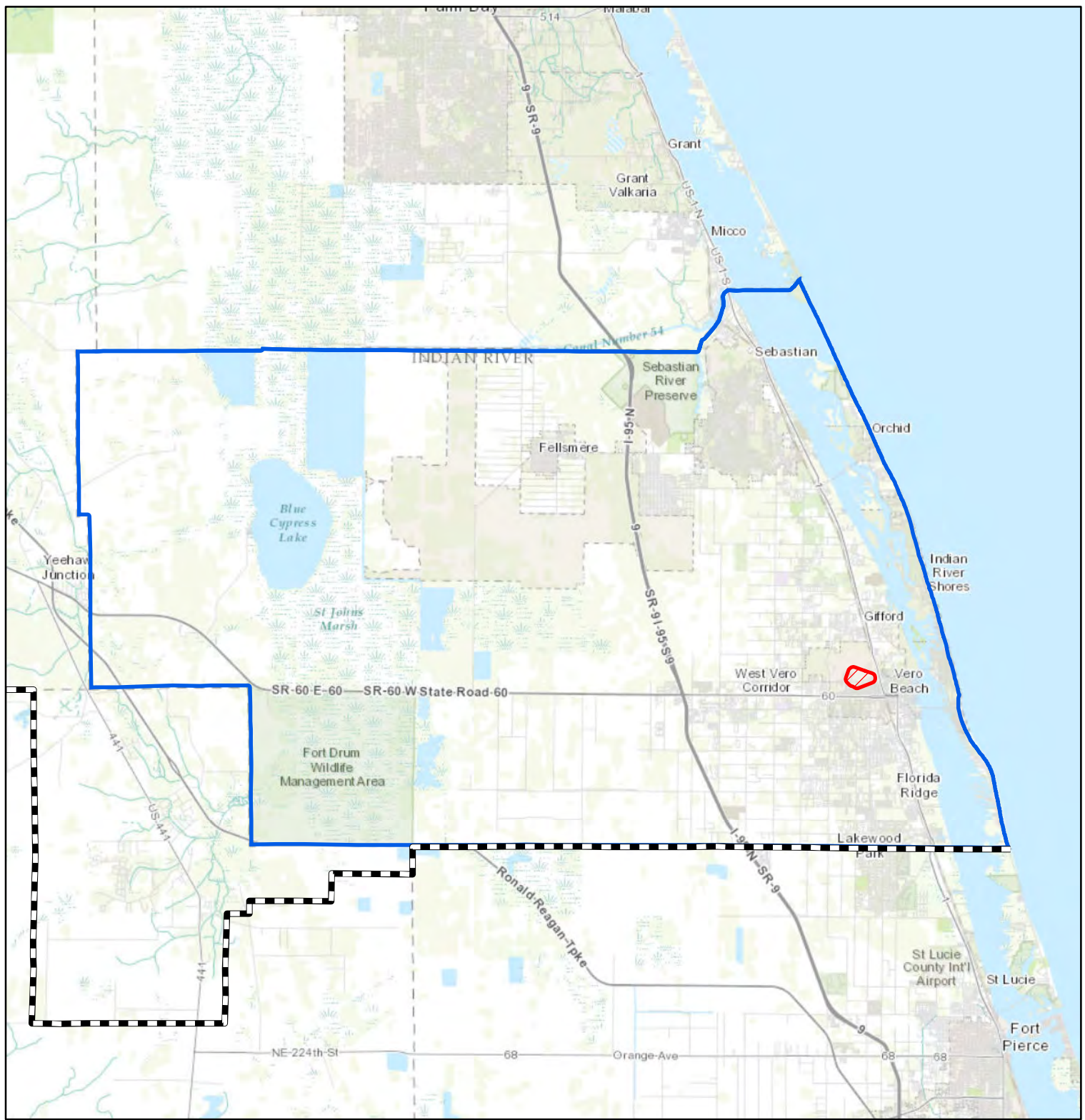



 1 inch = 7 miles

DUVAL COUNTY

-  Delineated area
-  SJRWMD boundary

This map depicts the groundwater contamination area delineated by the Department in Rule 62-524.430, F.A.C., for Duval County, effective 11/94.

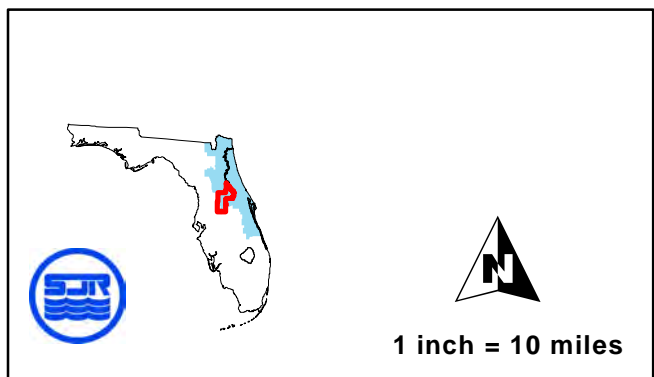
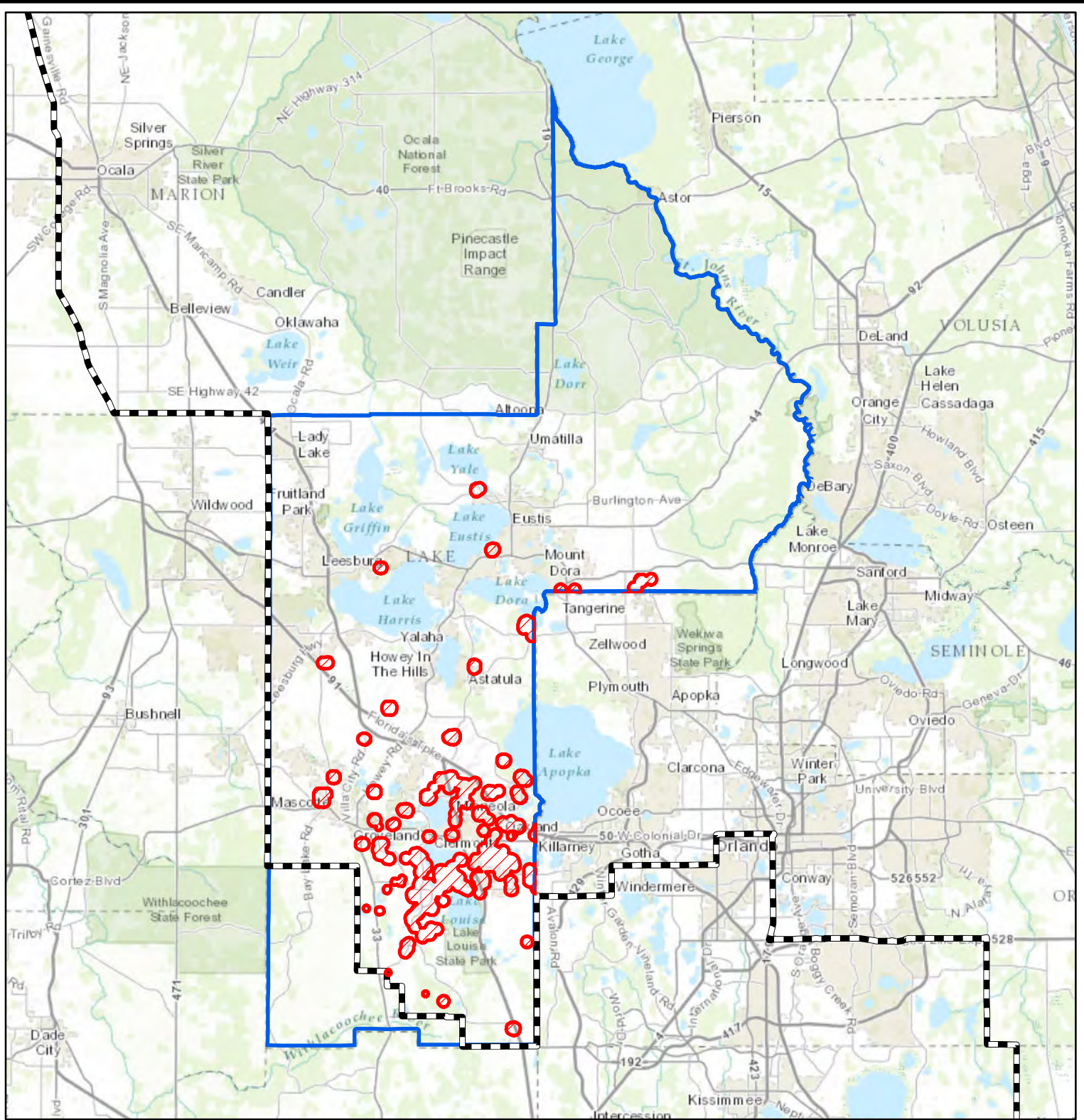


1 inch = 6 miles


INDIAN RIVER COUNTY

Delineated area
 SJRWMD boundary

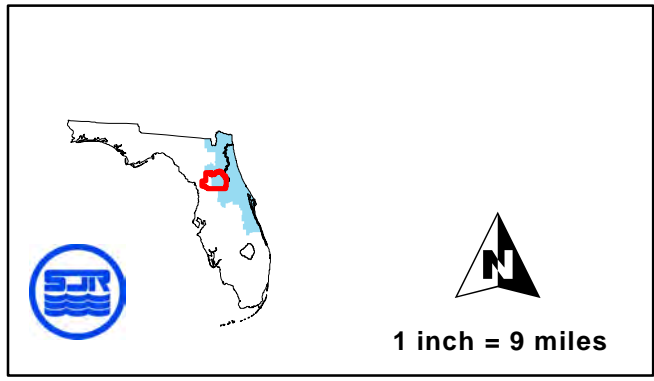
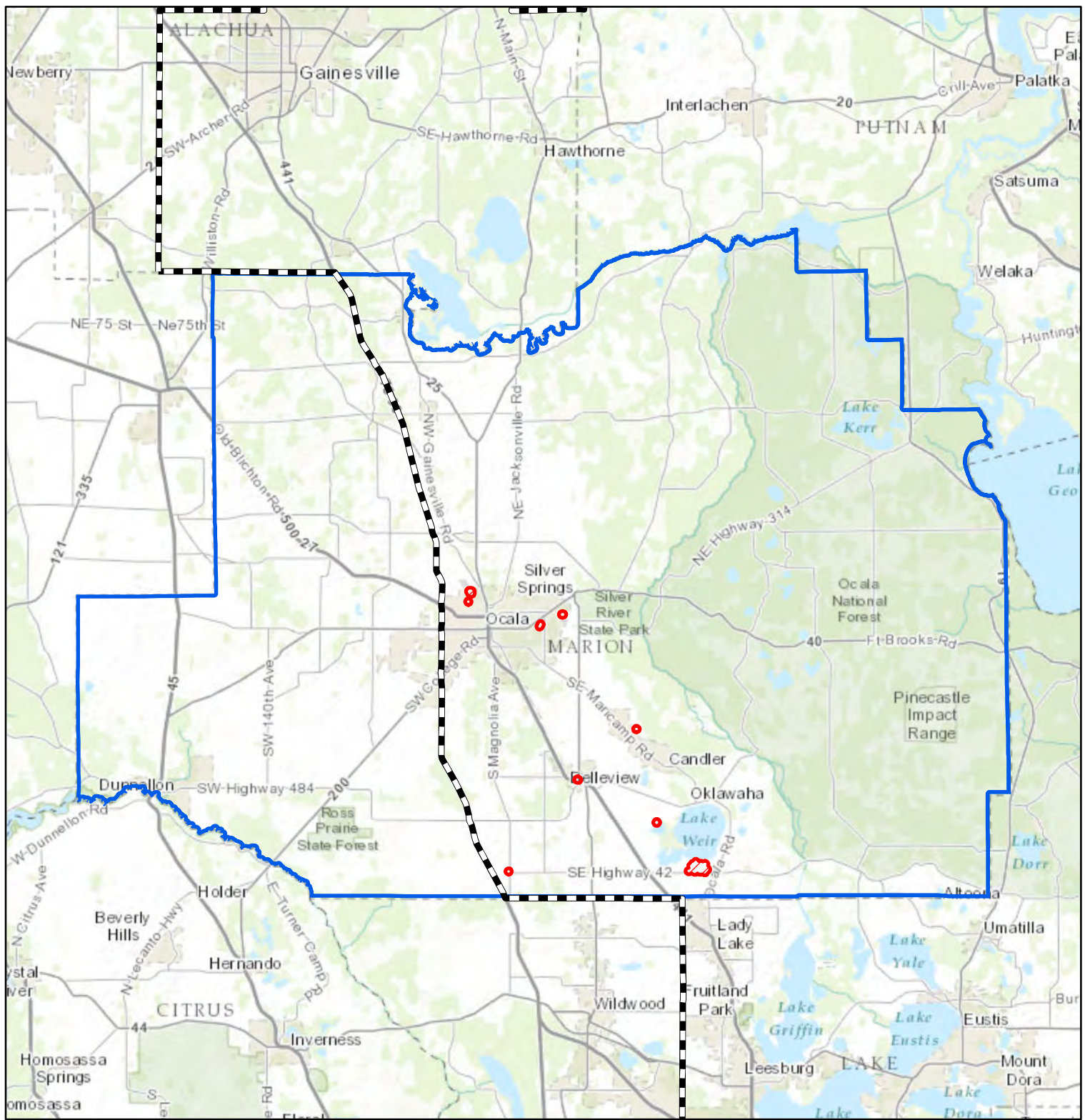
This map depicts the groundwater contamination area delineated by the Department in Rule 62-524.430, F.A.C., for Indian River County, effective 11/94.




LAKE COUNTY


-  Delineated area
-  SJRWMD boundary

This map depicts the groundwater contamination area delineated by the Department in Rule 62-524.430, F.A.C., for Lake County, effective 11/94.

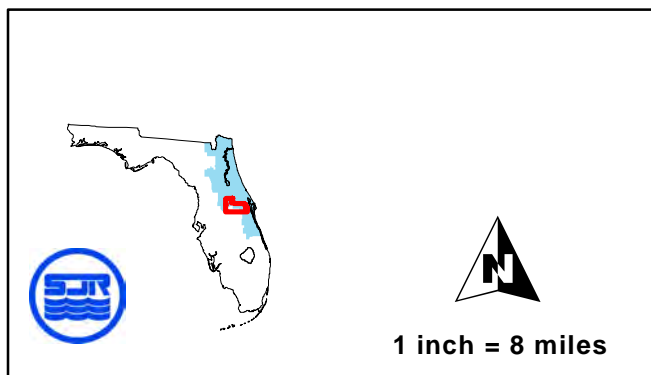
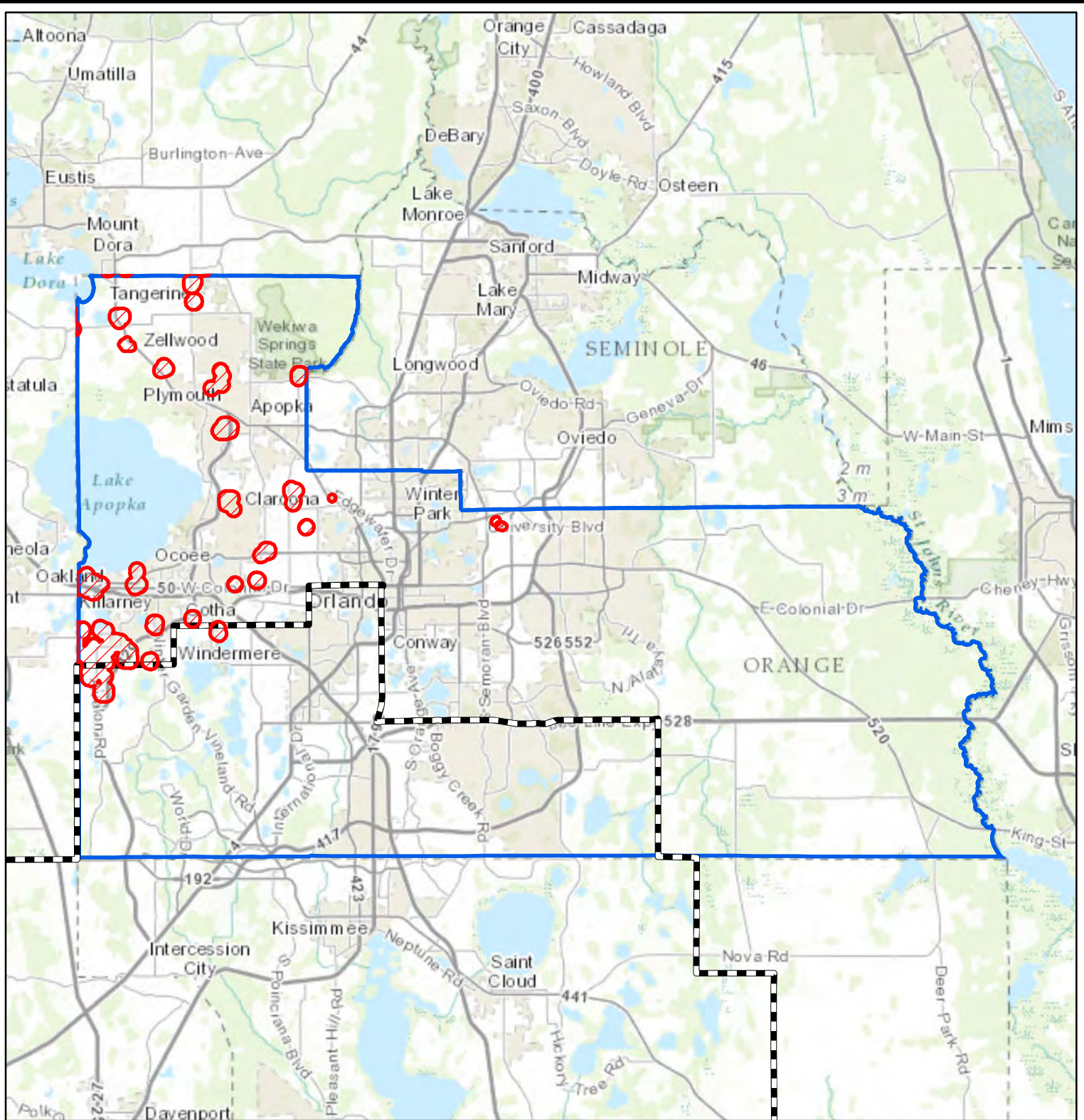


MARION COUNTY

 Delineated area


 SJRWMD boundary

This map depicts the groundwater contamination area delineated by the Department in Rule 62-524.430, F.A.C., for Marion County, effective 11/94.

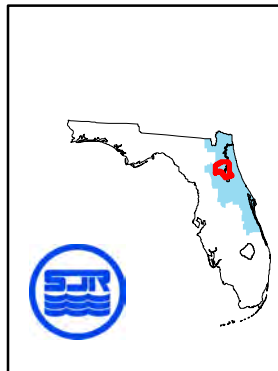
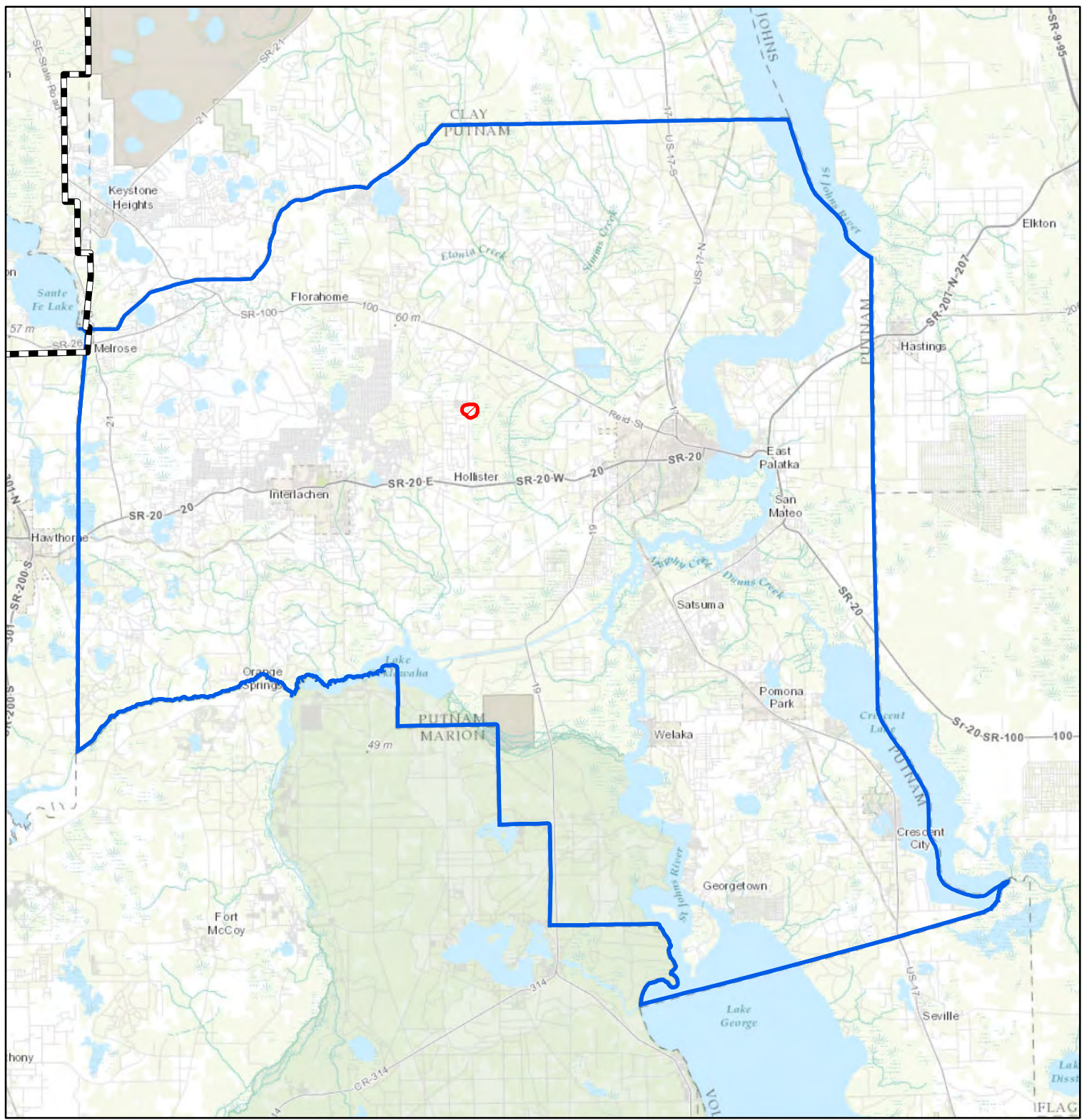


1 inch = 8 miles

ORANGE COUNTY



-  Delineated area
-  SJRWMD boundary

This map depicts the groundwater contamination area delineated by the Department in Rule 62-524.430, F.A.C., for Orange County, effective 11/94.

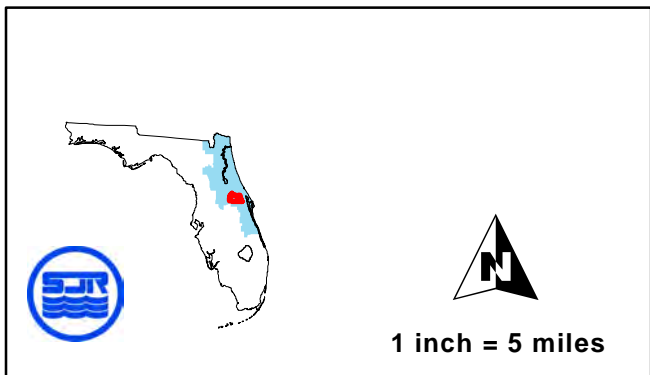
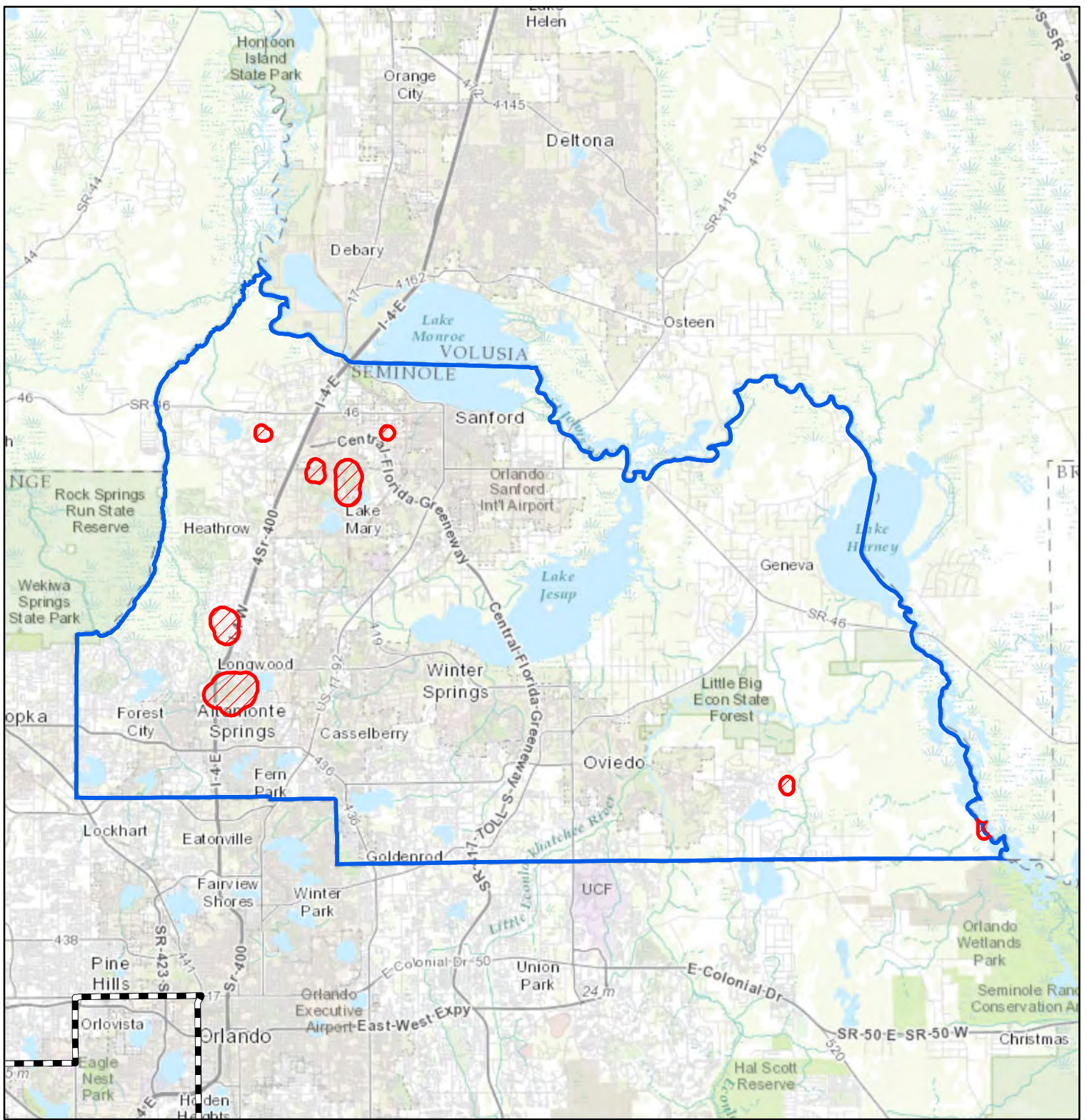


1 inch = 6 miles

PUTNAM COUNTY

-  Delineated area
-  SJRWMD boundary

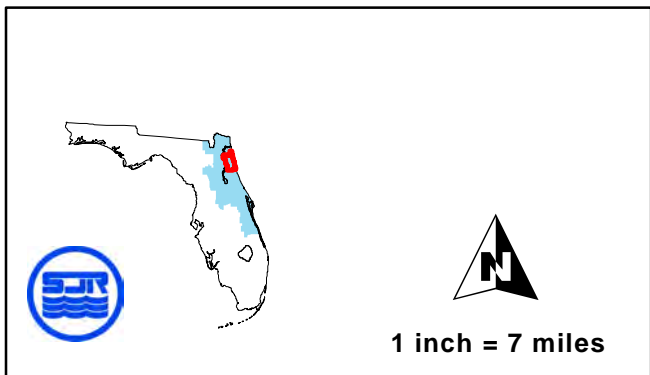
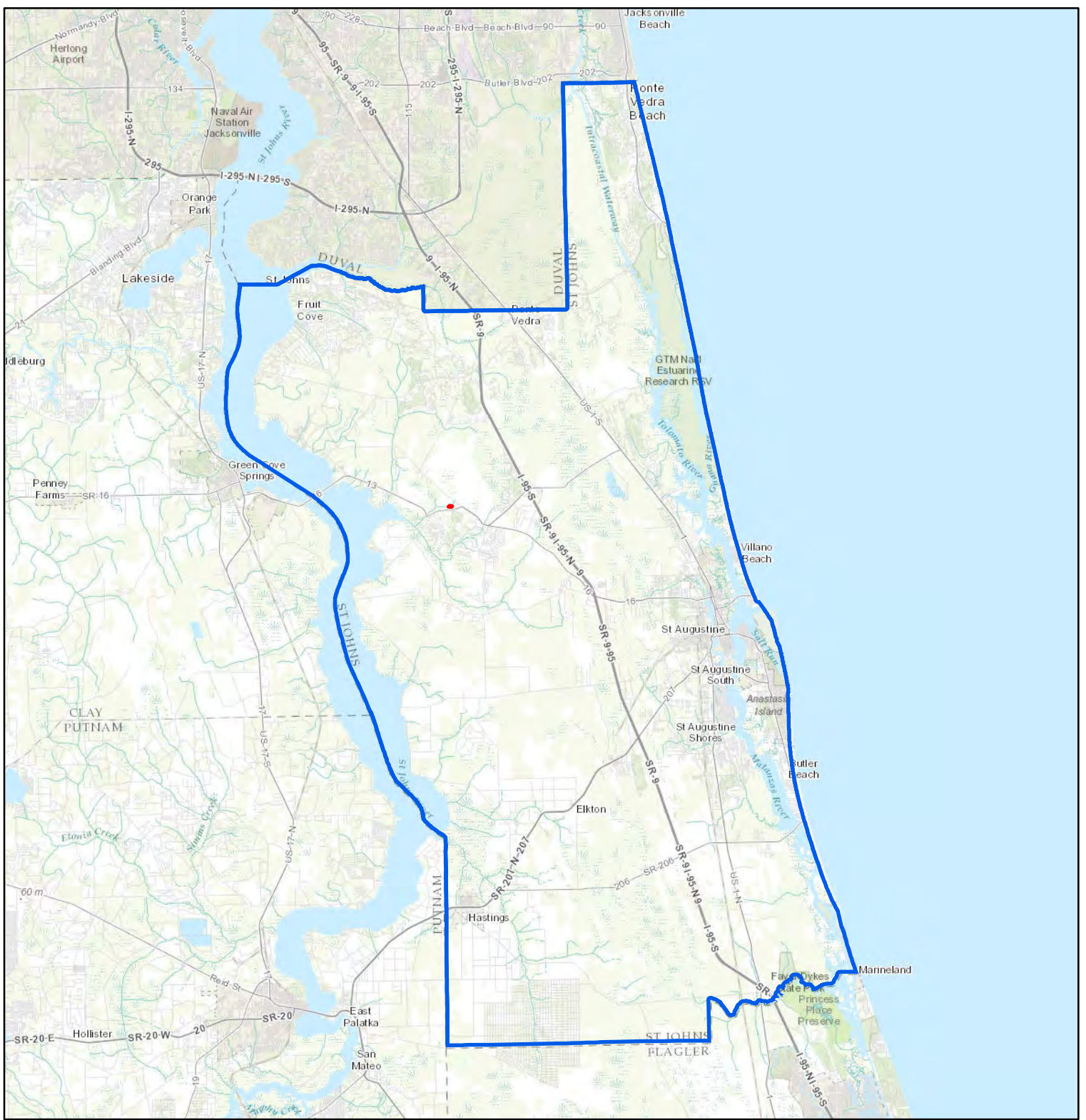
This map depicts the groundwater contamination area delineated by the Department in Rule 62-524.430, F.A.C., for Putnam County, effective 11/94.



SEMINOLE COUNTY

-  Delineated area
-  SJRWMD boundary

This map depicts the groundwater contamination area delineated by the Department in Rule 62-524.430, F.A.C., for Seminole County, effective 11/94.

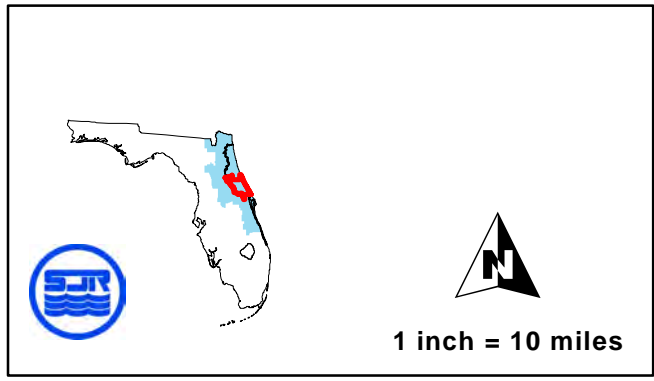
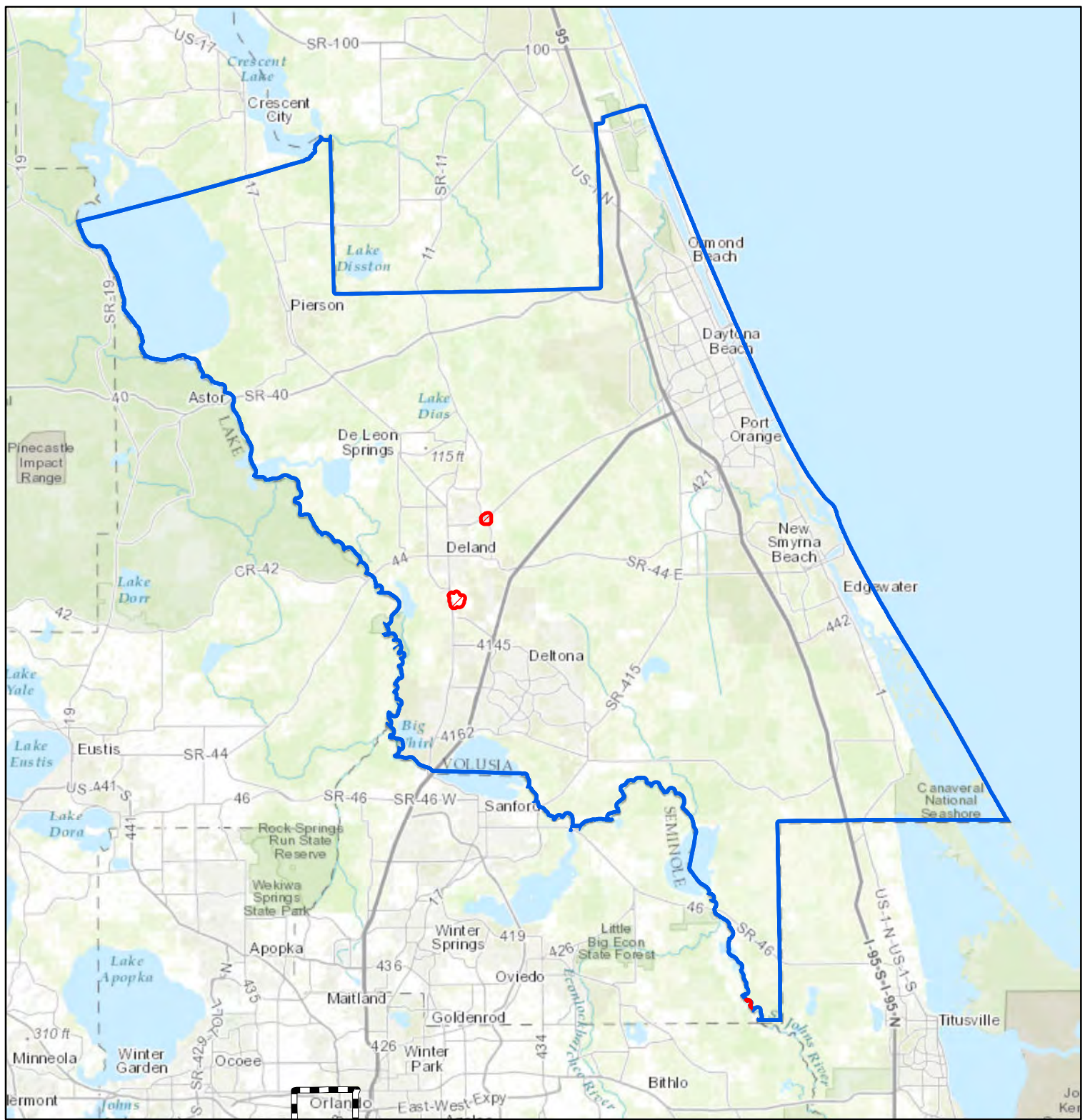


ST JOHNS COUNTY

 Delineated area

 SJRWMD boundary

This map depicts the groundwater contamination area delineated by the Department in Rule 62-524.430, F.A.C., for St. Johns County, effective 5/00.



VOLUSIA COUNTY

-  Delineated area
-  SJRWMD boundary

This map depicts the groundwater contamination area delineated by the Department in Rule 62-524.430, F.A.C., for Volusia County, effective 11/94.