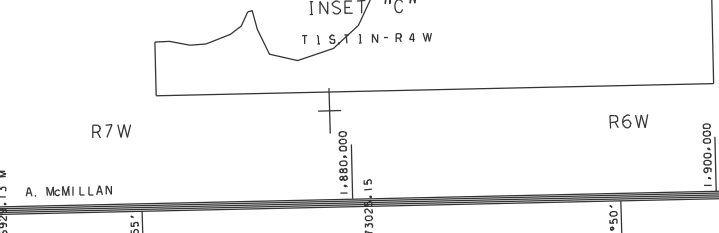
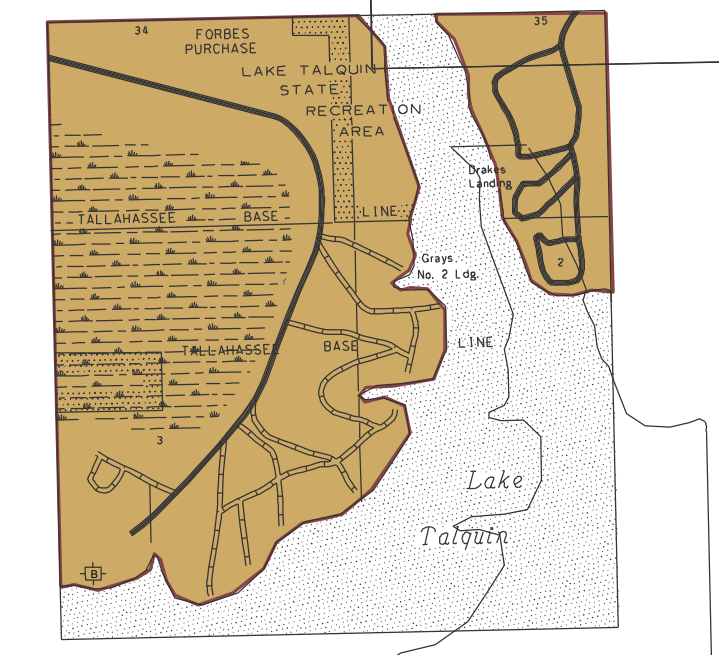
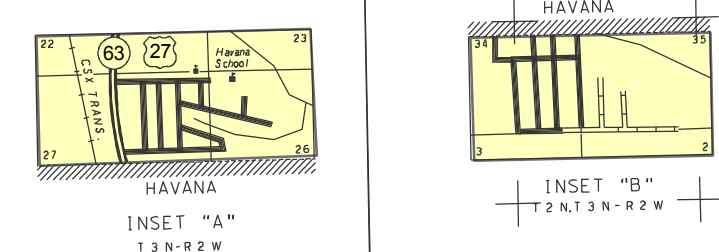


- GENERAL LEGEND**
- HIGHWAY WITH FULL CONTROL OF ACCESS
 - HIGHWAY INTERCHANGE
 - DIVIDED HIGHWAY
 - HARD SURFACED ROAD
 - SOIL, GRAVEL OR SHELL SURFACED ROAD
 - GRADED AND DRAINED ROAD
 - UNIMPROVED ROAD
 - PRIVATE ROAD
 - STREETS IN INSET AREAS
 - INTERSTATE HIGHWAY
 - U.S. NUMBERED HIGHWAY
 - COUNTY ROAD
 - RAILROAD
 - ABANDONED RAILROAD
 - RAILROAD STATION
 - GRADE CROSSING
 - RAILROAD BELOW
 - COMMERCIAL OR MUNICIPAL AIRPORT
 - LANDING AREA OR STRIP
 - NARROW STREAM
 - WIDE STREAM
 - DAM
 - DAM WITH LOCK
 - DAM WITH ROAD
 - LAKE, RESERVOIR OR POND
 - MARSH OR SWAMP
 - HIGHWAY BRIDGE
 - HIGHWAY GRADE SEPARATION
 - STATE BOUNDARY LINE
 - COUNTY BOUNDARY LINE
 - CIVIL TOWNSHIP BOUNDARY
 - LAND SECTION LINE
 - SURVEY BY OTHERS
 - FORBES PURCHASE LINE
 - PARK BOUNDARY
 - LOCATION OF INSET BOUNDARY WITHIN MAP
 - COUNTY SEAT
 - OTHER CITY OR VILLAGE
 - ▭ CORPORATE LIMITS
 - ▨ WAYSIDE PARK OR SMALL PARK
 - ▭ PARK WITH BOAT RAMP
 - ▭ BOAT RAMP
 - ▭ POST OFFICE
 - ▭ SCHOOL
 - ▭ CHURCH
 - ▭ CEMETERY
 - ▭ CHURCH AND CEMETERY
 - ▭ MINE OR STRIP MINE
 - ▭ GOVERNMENTAL RESEARCH STATION
 - ▭ FARMERS MARKET
 - ▭ GAME CHECKING STATION
 - ▭ FIRE CONTROL HEADQUARTERS
 - ▭ LOOKOUT TOWER
 - ▭ PATROL OR POLICE STATION
 - ▭ DEPARTMENT OF TRANSPORTATION FACILITY
 - ▭ SEWAGE DISPOSAL PLANT
 - ▭ SANITARY FILL
 - ▭ POWER PLANT
 - ▭ POWER SUBSTATION
 - ▭ COMMUNICATION FACILITY
 - ▭ LOCKED GATE OR FENCE
 - ▭ TRIANGULATION STATION WITH NAME
 - ▭ LOCATION OF SYMBOL

**UPPER TELOGIA CREEK
DRAINAGE BASIN WATER
RESOURCE CAUTION AREA
AND AREA OF RESOURCE
CONCERN MAP FOR
GADSDEN COUNTY
FLORIDA**

EFFECTIVE APRIL 2015



Water Resource Cautions Area
 Area of Resource Concern

The Areas of Resource Concern and Water Resource Cautions Areas are derived from Chapter 40A-2, Florida Administrative Code. Upper Telogia Creek Drainage Basin Water Resource Cautions Area and Area of Resource Concern Map for Gadsden County, Incorporated by reference in rule 40A-2.902, F.A.C.

This map was compiled from U.S. Geological Survey quadrangle maps, aerial photography from 1961, 1966, Coastal Land Office data, and inventory surveys May, 2001, and other maps. This map was prepared using information compiled from the Florida Department of Transportation, Florida State System of Public Works, Florida State System of Public Works, Florida State System of Public Works, Florida State System of Public Works.

The material herein is provided as information only. It does not constitute a warranty of any kind, and it is not intended to be used for any purpose other than that for which it was prepared for this county.

No attempt has been made to show all drainage canals and ditches.

No claims are made for the basins or other water bodies shown on this map. The Florida Department of Transportation cannot accept responsibility for inaccuracies resulting from unobtainable or outdated data.

PERMISSION TO COPY OR REPRODUCE THIS MAP MUST BE OBTAINED FROM THE SURVEYING AND MAPPING OFFICE, DEPARTMENT OF TRANSPORTATION, TALLAHASSEE, FLORIDA 32304-0001.

1 INCH = 1 MILE
 1:62,500
 0 0.5 1 2 3 4 5 6 KILOMETERS
 SCALE
 0 0.1 0.2 0.3 0.4 0.5 MILE
 SCALE FOR INSETS
 JULY, 2001
 COPYRIGHT FLORIDA DEPARTMENT OF TRANSPORTATION 2001

REVISIONS	DATE

FOR PRICE AND AVAILABILITY CONTACT:
 FLORIDA DEPARTMENT OF TRANSPORTATION
 111 W. WASHINGTON STREET, SUITE 1000
 TALLAHASSEE, FL 32304-0001
 PHONE (904) 414-4000

CITY BOUNDARIES ARE PLOTTED USING ALL AVAILABLE INFORMATION. THE FLORIDA DEPARTMENT OF TRANSPORTATION CANNOT ACCEPT RESPONSIBILITY FOR INACCURACIES RESULTING FROM UNOBTAINABLE OR OUTDATED DATA.

DUE TO THE SCALE OF THIS MAP THE STATE OF FLORIDA DEPARTMENT OF TRANSPORTATION ACCEPTS NO RESPONSIBILITY FOR INACCURACIES IN FEDERAL COORDINATE, COMPANIONSHIP OF INTERSECTIONAL AND OTHER RELATED DATA.